



Che-1 Polyclonal Antibody

Catalog No	YP-Ab-01609
Isotype	IgG
Reactivity	Human;Mouse;Rat
Applications	WB;IHC;IF;ELISA
Gene Name	AATF
Protein Name	Protein AATF
Immunogen	The antiserum was produced against synthesized peptide derived from human AATF. AA range:10-59
Specificity	Che-1 Polyclonal Antibody detects endogenous levels of Che-1 protein.
Formulation	Liquid in PBS containing 50% glycerol, 0.5% BSA and 0.02% sodium azide.
Source	Polyclonal, Rabbit,IgG
Purification	The antibody was affinity-purified from rabbit antiserum by affinity-chromatography using epitope-specific immunogen.
Dilution	WB: 1/500 - 1/2000. IHC: 1/100 - 1/300. ELISA: 1/10000.. IF 1:50-200
Concentration	1 mg/ml
Purity	≥90%
Storage Stability	-20°C/1 year
Synonyms	AATF; CHE1; DED; HSPC277; Protein AATF; Apoptosis-antagonizing transcription factor; Rb-binding protein Che-1
Observed Band	63kD
Cell Pathway	Nucleus, nucleolus .
Tissue Specificity	Ubiquitously expressed. Expressed at high levels in brain, heart, kidney, placenta and thymus.
Function	function:May function as a general inhibitor of the histone deacetylase HDAC1. Binding to the pocket region of RB1 may displace HDAC1 from RB1/E2F complexes, leading to activation of E2F target genes and cell cycle progression. Conversely, displacement of HDAC1 from SP1 bound to the CDKN1A promoter leads to increased expression of this CDK inhibitor and blocks cell cycle progression. Also antagonizes PAWR mediated induction of aberrant amyloid peptide production in Alzheimer disease (presenile and senile dementia), although the molecular basis for this phenomenon has not been described to date.,PTM:Hyperphosphorylated during the G1/S phase transition.,similarity:Belongs to the AATF family.,subunit:Binds PAWR, POLR2J, RB1/RB, RBL1/P107, RBL2/P130, and SP1. May also bind MAPT.,tissue specificity:Ubiquitously expressed. Expressed at high levels in brain, heart, kidney, placenta and thymus.,

**Background**

The protein encoded by this gene was identified on the basis of its interaction with MAP3K12/DLK, a protein kinase known to be involved in the induction of cell apoptosis. This gene product contains a leucine zipper, which is a characteristic motif of transcription factors, and was shown to exhibit strong transactivation activity when fused to Gal4 DNA binding domain. Overexpression of this gene interfered with MAP3K12 induced apoptosis. [provided by RefSeq, Jul 2008],

matters needing attention

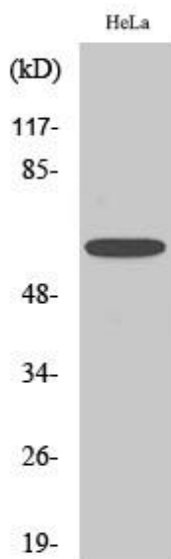
Avoid repeated freezing and thawing!

Usage suggestions

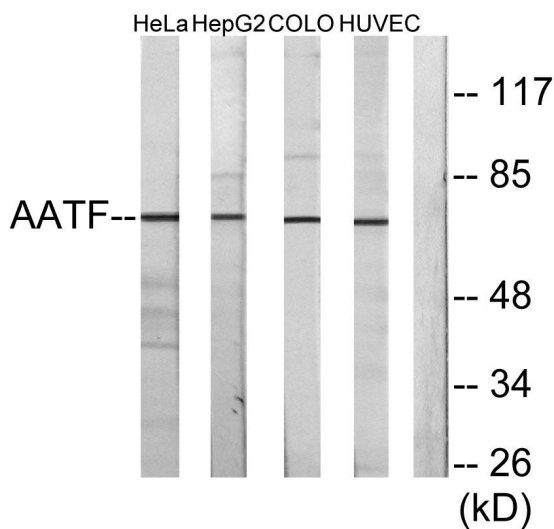
This product can be used in immunological reaction related experiments. For more information, please consult technical personnel.



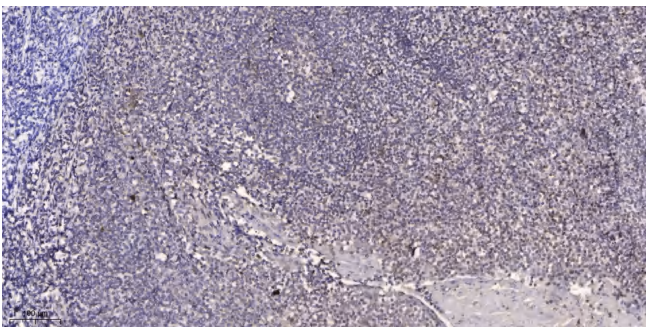
Products Images



Western Blot analysis of various cells using Che-1 Polyclonal Antibody



Western blot analysis of lysates from HeLa cells, HepG2 cells, COLO205 cells, and HUVEC cells, using AATF Antibody. The lane on the right is blocked with the synthesized peptide.



Immunohistochemical analysis of paraffin-embedded human tonsil. 1, Antibody was diluted at 1:200(4° overnight). 2, Tris-EDTA,pH9.0 was used for antigen retrieval. 3,Secondary antibody was diluted at 1:200(room temperature, 45min).